

Queensland Baptist Care Retirement Village

We were engaged to prepare a response to Gold Coast City Council's conditional approval package for a retirement village at Mudgeeraba. The site was ideally located near other aged care-compatible facilities, but had a legacy of complex approvals, including Court conditions and various covenants.

Challenges and Solutions

To progress the project, our client needed to understand the environmental management commitments established by the approval conditions, resolve conflicting and poorly-aligned conditions, and be supplied with a strategy that coordinated the environmental management works with the broader construction program.

A major challenge was re-negotiating the timeframes around delivery of the environmental management works. The approval conditions required their delivery in the early stage of construction, but these upfront costs were not accounted for in the project feasibility, nor could the works be practically coordinated with construction at that stage of development.

We prepared vegetation, rehabilitation, and fauna management plans that aligned with project staging, and negotiated more realistic delivery timeframes with Council.

Outcome

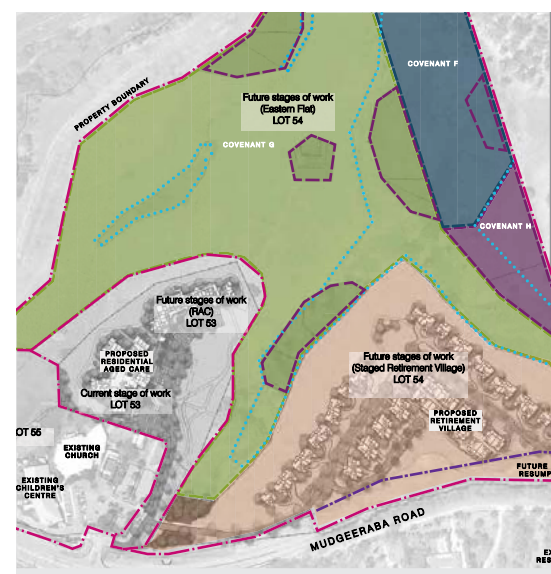
All management plans (including alternate timeframes for implementation) have been approved, and the project has progressed to detailed design.

CLIENT

QUEENSLAND
BAPTIST CARE

LOCATION

MUDGEERABA
GOLD COAST
QUEENSLAND



28 South Environmental

info@28south.com.au